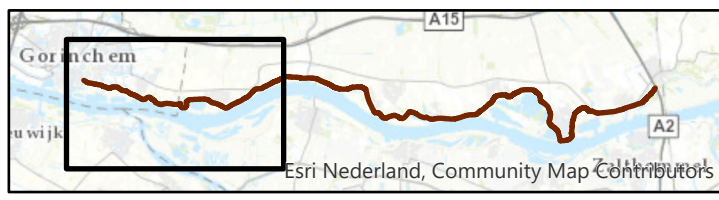


Sources: Esri, HERE, Garmin, Intermap, increment P Corp., GEBCO, USGS, FAO, NPS, NRCAN, GeoBase, IGN, Kadaster NL, Ordnance Survey, Esri Japan, METI, Esri China (Hong Kong), (c) OpenStreetMap contributors, and the GIS User Community

# Amfibiëen

- Soortenkaart
- Amfibiëen, Bufonidae (Padden)

Versie ontwerp: OPPWW v1.2  
 Datum: 25-2-2020  
 Schaal: 1:25.000



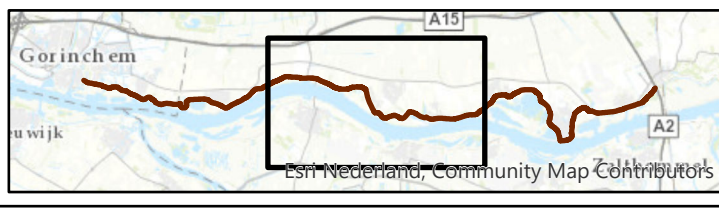


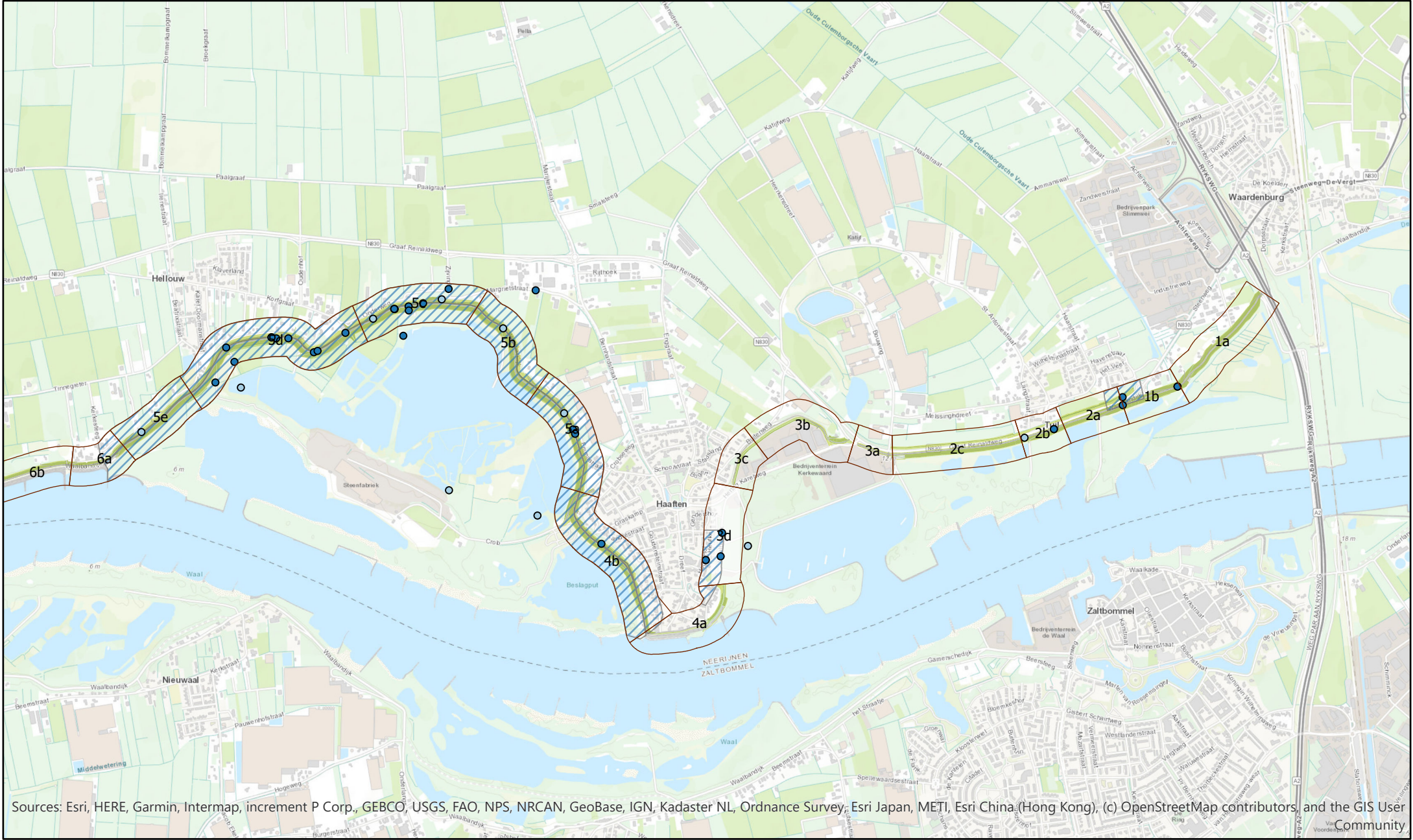
Sources: Esri, HERE, Garmin, Intermap, increment P Corp., GEBCO, USGS, FAO, NPS, NRCAN, GeoBase, IGN, Kadaster NL, Ordnance Survey, Esri Japan, METI, Esri China (Hong Kong), (c) OpenStreetMap contributors, and the GIS User Community

**Amfibieën**

Versie ontwerp: OPPWW v1.2  
 Datum: 25-2-2020  
 Schaal: 1:25.000

- Soortenkaart
- Amfibieën, Salamandridae (Echte salamanders)
- Leefgebieden
- ▨ kamsalamander





Sources: Esri, HERE, Garmin, Intermap, increment P Corp., GEBCO, USGS, FAO, NPS, NRCAN, GeoBase, IGN, Kadaster NL, Ordnance Survey, Esri Japan, METI, Esri China (Hong Kong), (c) OpenStreetMap contributors, and the GIS User Community

# Amfibieën

Versie ontwerp: OPPWW v1.2  
 Datum: 25-2-2020  
 Schaal: 1:25.000

- Soortenkaart
- Amfibieën, Bufonidae (Padden)
  - Amfibieën, Ranidae (Kikkers)
  - Amfibieën, Salamandridae (Echte salamanders)

- Leefgebieden
- kanssalamander



Esri Nederland, Community Map Contributors